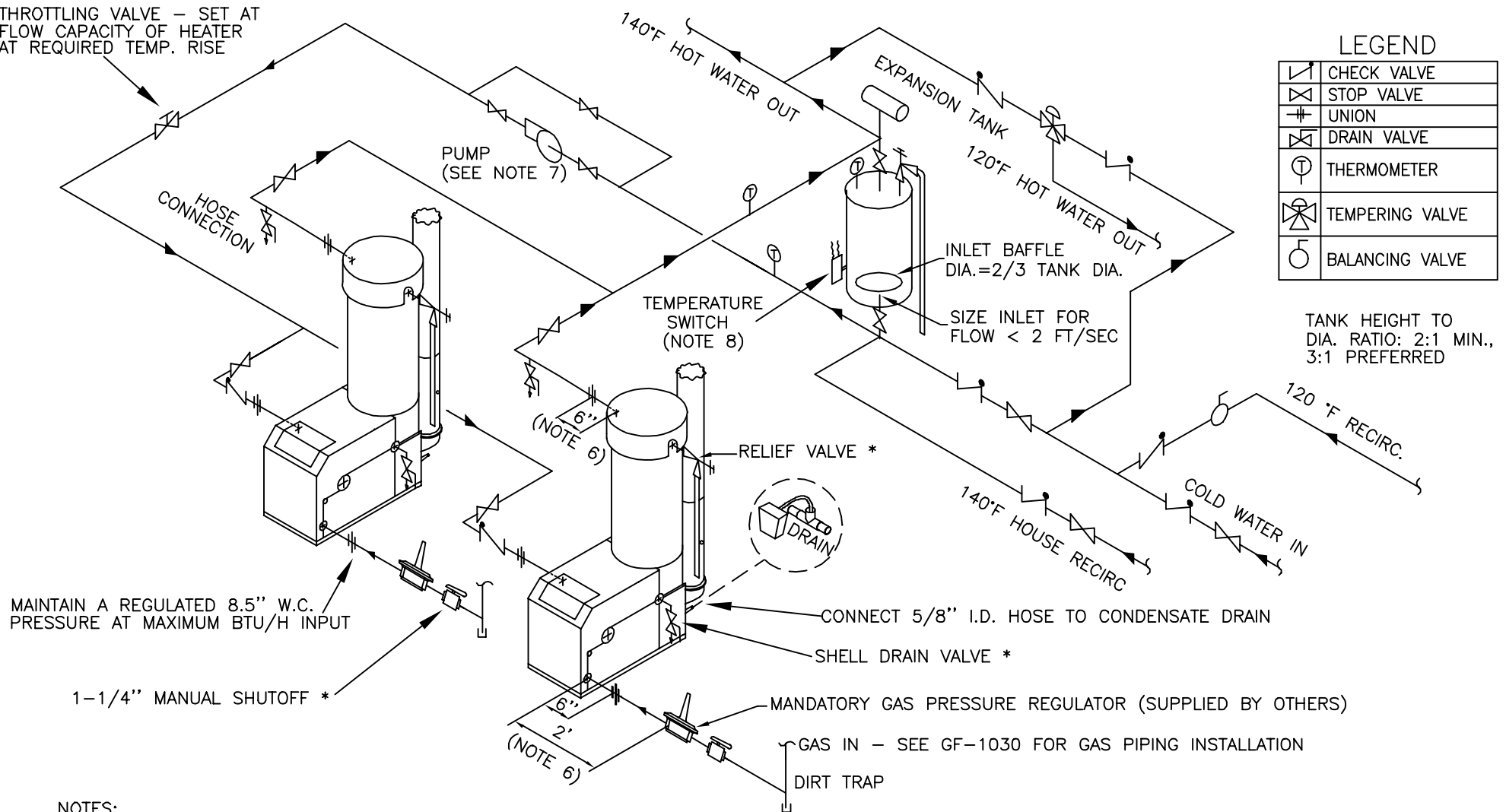


THROTTLING VALVE - SET AT FLOW CAPACITY OF HEATER AT REQUIRED TEMP. RISE



LEGEND

	CHECK VALVE
	STOP VALVE
	UNION
	DRAIN VALVE
	THERMOMETER
	TEMPERING VALVE
	BALANCING VALVE

TANK HEIGHT TO DIA. RATIO: 2:1 MIN., 3:1 PREFERRED

MAINTAIN A REGULATED 8.5" W.C. PRESSURE AT MAXIMUM BTU/H INPUT

1-1/4" MANUAL SHUTOFF *

NOTES:

- 1) FOR ACTUAL SIZES AND LOCATIONS OF PIPING AND OTHER CONNECTIONS TO THE HEATER, SEE DIMENSIONAL DRAWING
- 2) SHELL DRAIN VALVE AND CONDENSATE HOSE SHOULD BE ARRANGED TO PERMIT THE FLUIDS TO DRAIN FREELY, BY GRAVITY, TO A FLOOR DRAIN. RELIEF VALVE SHOULD BE PIPED VERTICALLY TO A HEIGHT 18" ABOVE THE FLOOR.
- 3) ALL (*) ITEMS ARE INCLUDED SEPARATELY IN SHIPMENT.
- 4) THIS IS A TYPICAL INSTALLATION DRAWING. LOCAL CODES AND AUTHORITIES SHOULD BE CONSULTED.
- 5) HOSE CONNECTION AT HEATER OUTLET IS FOR INITIAL HEATER CALIBRATION DURING START-UP.
- 6) LOCATE WATER INLET AND OUTLET FITTINGS (i.e. UNIONS, ELBOWS, ETC.) A MINIMUM OF 6" FROM WATER HEATER FITTINGS, TO PREVENT INTERFERENCE WITH REMOVAL OF HEATER PANELS. ALL PIPING & ELECTRIC CONNECTIONS SHOULD BE 6" AWAY FROM SIDE PANELS. LOCATE GAS PRESSURE REGULATOR A MINIMUM OF 2' FROM HEATER.
- 7) PUMP SHOULD BE CAPABLE OF HEATER'S RATED FLOW AT DESIGN TEMPERATURE RISE.
- 8) MOUNT TEMPERATURE SWITCH 1/3 UP FROM THE BOTTOM OF THE TANK, SWITCH WILL TURN PUMP ON AND OFF.

<p>AERCO INTERNATIONAL, INC. NORTHVALE, NJ 07647</p>		
<p>KC1000 1 MIL. BTU GAS FIRED WATER HEATERS MULTIPLE UNITS, STRATIFIED TANK & TWO TEMPERATURE ZONES</p>		
<p>DWN. BY <u>SCD</u> DATE <u>111798</u> SCALE <u>NTS</u> APPD. <u>MPC</u> DATE <u>122298</u></p>	<p>SD-A-501</p>	<p>REV. C</p>