



MODEL KC-1000 GWW

TECHNICAL DATA

AERCO KC Gas Fired Commercial Water Heating System

The AERCO KC-1000 Water Heater utilizes state-of-the-art technology to easily meet highly demanding commercial and industrial hot water requirements in a compact and reliable condensing design. The AERCO modulating concept quickly and efficiently maintains **precise water temperature** control for all flow requirements. Water heating thermal **efficiencies can range from 93% to 99+%**. Its efficiency actually increases at lower flows due to its unique inverse efficiency curve.

The advanced control system of the Kc1000 modulates the burner to the precise point needed to exactly match input to load. This is done over 14:1 ratio (from 1,000,000 BTUH to 70,000 BTUH) in little as 4 seconds if necessary. **Wasteful overshooting and cycling are virtually eliminated as are storage tanks, mixing valves and other temperature averaging components** in most applications. The set point is adjustable from 100F to 200F, and control to

Direct venting, sealed combustion and conventional vent capabilities provide broad installation flexibility. Small foot print, doorway size, and quiet operation make it ideal for retrofit. Tight temperature control, high efficiency, reliability and longevity make the KC1000 water heating system a truly unique and advanced design.



RECOVERY CAPACITY*

Temperature Rise (F)	60	70	80	90	100	110	120	130	140
Gallons Per Hour	1860	1594	1395	1240	1116	1014	930	859	797

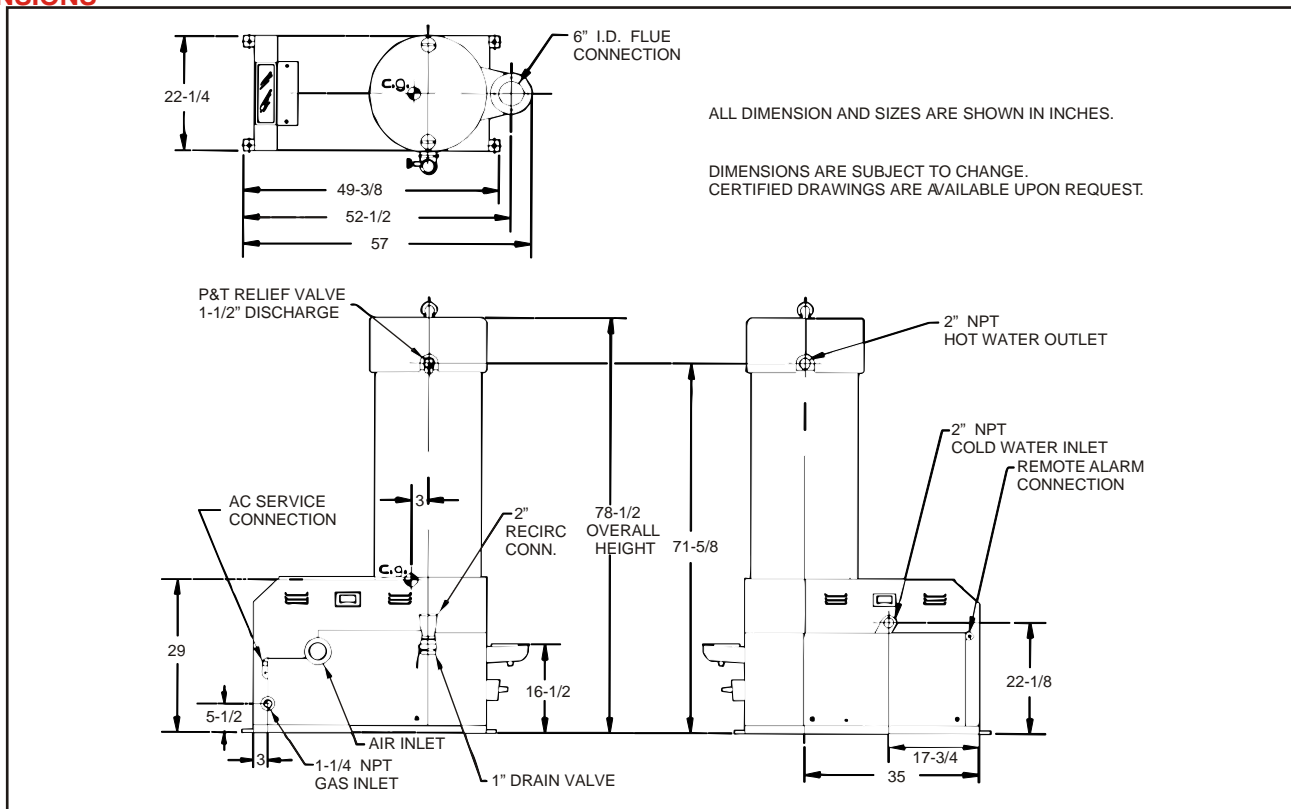
*In condensing mode <2000 ft above sea level

KC1000 FEATURES

- Precise Temperature Control +/-4F
- Fully Modulating, 14:1 Energy Input
- Condensing Design
- Compact, Space Efficient Design
- Natural Gas or Propane
- Outlet Water Temperature of 100 to 200F
- UL, ULC Listed for Alcove Installation on Combustible Flooring
- Ideal for New or Retrofit
- UL, ULC Listed, FM Approved, ASME Stamped
- 160 psig ASME Working Pressure Certified
- Direct Vent or Conventional Flue Capabilities
- Optional Sealed Combustion
- Quiet Operation throughout Firing Range
- Remote Alarm Contacts



DIMENSIONS

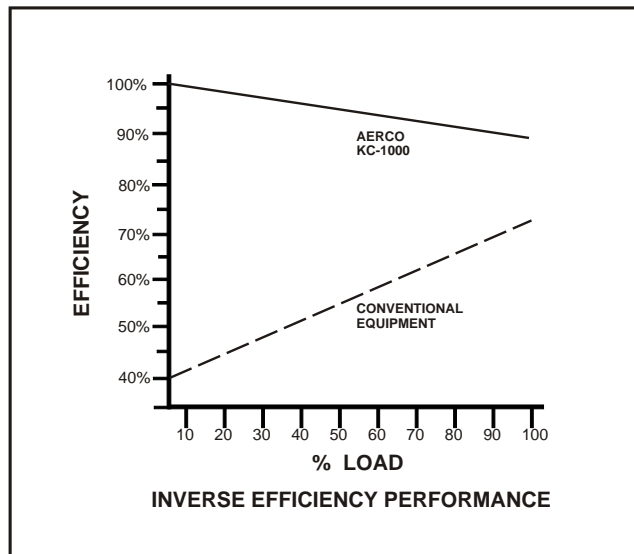
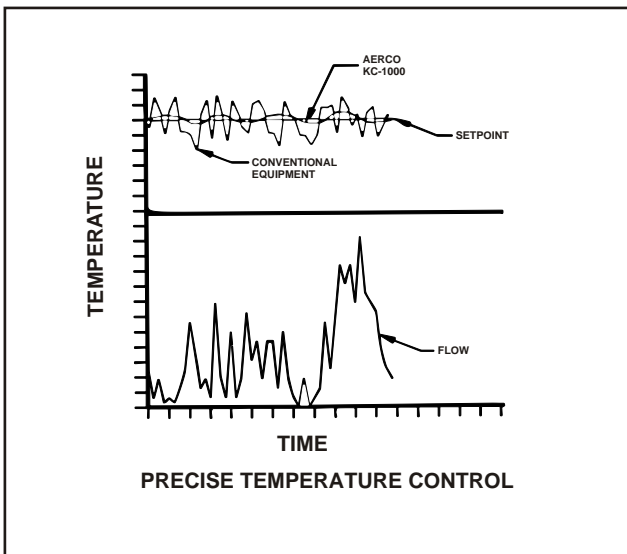


KC 1000 SPECIFICATIONS

Adjustable Temperature Control.....Up to 200F
 Accuracy.....+/-4F
 Input.....1,000,000 BTUH
 Net Output.....930,000 BTUH
 Turndown Ratio.....14:1
 Flue Size.....6" Diam
 Water Inlet & Outlet.....2" NPTF
 Gas Connection.....1 1/4" NPT Male
 Gas Pressure Requirements.....8.5" WC @ Full Load
 14 v WC maximum
 Maximum Continuous Water Flow.....30GPM

Condensate Connection.....5/8" I.D. Male Hose Fitting
 Pressure Rating.....160 psig @ 200F
 Standard Listing & Approvals.....UL, ULC, FM, ASME
 Optional Approval.....IRI
 Electrical Requirements.....120/1/60/20 AMP
 Standby Power Consumption.....40 watts
 Water Pressure Drop.....0.7 psi
 Water Volume.....23 gallons
 Shipping Weight.....1350 lbs

CONTROL WITH EFFICIENCY



Represented by: Industrial Heater
 8400 Wolf Lake Dr.
 Suite 116
 Bartlett, Tennessee 38133
 Tel (888) 451-4328
 Fax (901) 382-4766

HEAT EXCHANGERS • WATER HEATERS • BOILERS • CONTROL VALVES • STEAM GENERATORS



HOT WATER SYSTEMS

AERCO INTERNATIONAL, INC. • 159 PARIS AVE. • NORTHVALE, N.J. 07647

© AERCO INTERNATIONAL, INC.